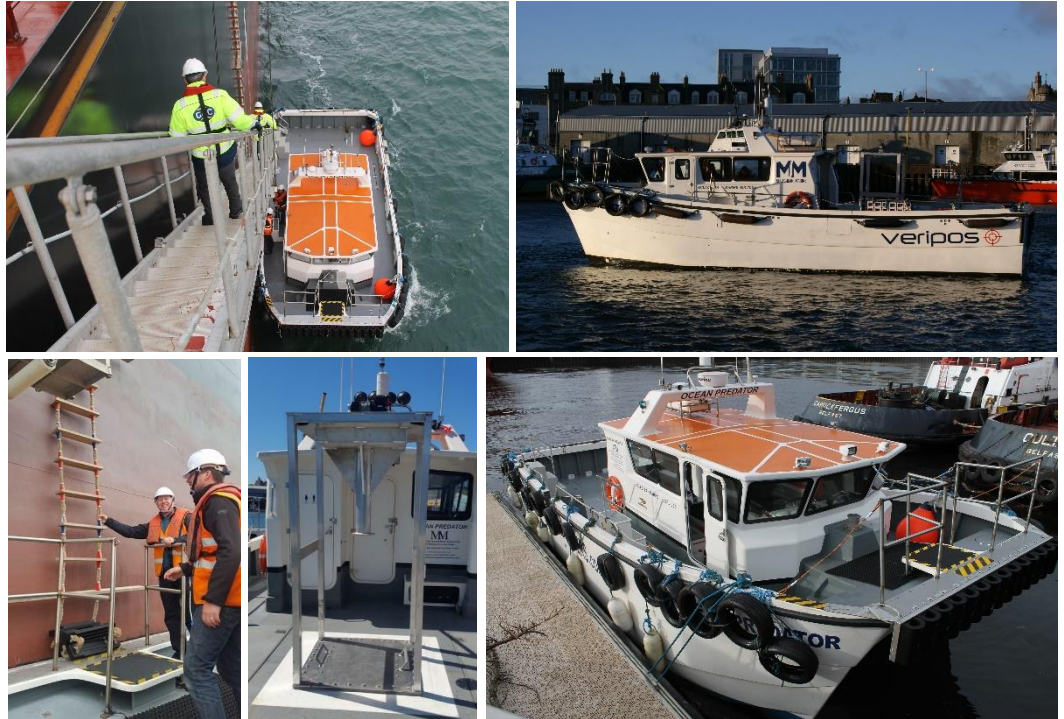


OCEAN PREDATOR

Built in 2011 specifically for the task of transporting and transferring personnel to ships waiting off Aberdeen. With a large open plan cabin with seating, toilet and cooking facilities onboard. Deck space of 22m2 and survey moon pool / pole system this vessel is a safe stable platform with a transit speed of up to 25knots.



Moon pool pole deployment system, survey grade Veripos LD5 GPS, spacious cabin and deck, very capable all-round workboat that can safely handle the weather.

Principal Dimensions

Length overall 12.5m
 Beam overall 5.0m
 Weight 12.5t
 Draft 1.0m
 Operating speed 25kts

Main Features

- Bow transfer arrangement
- 3 KVA generator
- Open plan wheelhouse with table and seating
- 700mm sq. survey moon pool
- Survey grade LD5 GPS System
- Coded 3 crew and 12 passengers

Engines

- 2 x 370 BHP Iveco Diesel Engines
- Fuel Consumption each 30-55ltrs per hr

Working Area

- 60NM Offshore
- Max wave height 4m

Work Scope

- Survey
- Crew Transfer
- Safety Boat
- Cargo Transfer
- Dive Support

Project Manager



Competitive



Certified Crew



Flexible 24hrs



Safe & Experienced



Oncall: +44 (0)7455139708 **Office:** +44 (0)1561 320965

McLachlan Marine is a trading name of Castle Charter & Marine Services Ltd

VAT Number: 173065417 Registered Company No.420839

Office & Workshop: The Neuk Yard, Monboddo, Fordoun, AB301JT

www.McLachlanMarine.com